

Intermot Hydraulic Motors IAM•HD Series

H6 Models

***IAM•HD 2200 – 2500 – 3000 – 3500 H6
IAM•HD 2200/C – 2500/C – 3000/C – 3500/C H6***

INDEX

| | |
|--|---------|
| TECHNICAL DATA | Pag. 17 |
| IAM•HD 2200–2500–3000–3500 | Pag. 18 |
| IAM•HD 2200/C – 2500/C – 3000/C 3500/C H6 | Pag. 19 |
| ORDERING INSTRUCTIONS | Pag. 20 |

IAM•HD H6

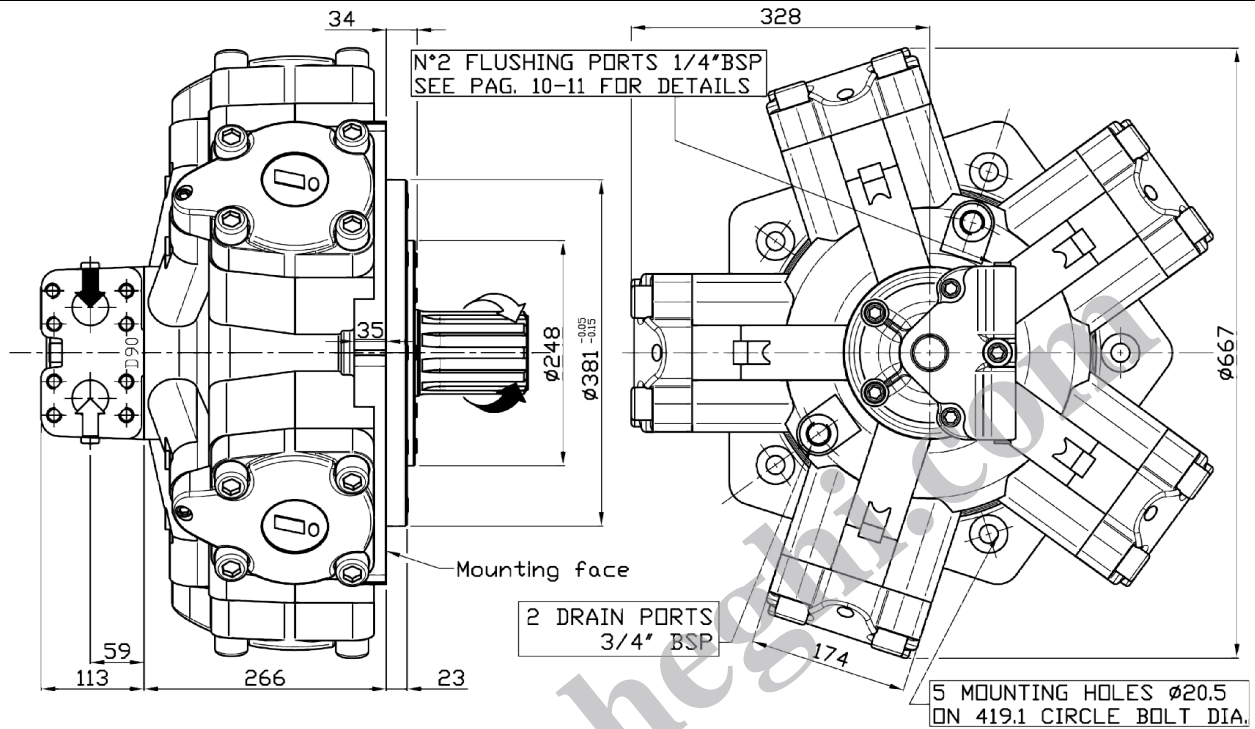
Technical data

| MODEL | N° of pistons | Displacement | Specific Torque | Pressure | | | Speed | | Max Power | Dry Mass | Max case pressure | Max back pressure | Temperature range |
|-----------|---------------|--------------|-----------------|----------------------|----------|------|-----------|------|-----------|----------|-------------------|-------------------|-------------------|
| | | | | Max Cont. | Max Int. | Peak | Max Cont. | Peak | | | | | |
| | | | | cm ³ /rev | Nm/bar | bar | | | | | | | |
| IAM•HD H6 | 2200 | 2126 | 35.1 | 270 | 320 | 350 | 325 | 375 | 235 | 308 | 6 | 70 | -30 ÷ +70 |
| | 2500 | 2525 | 40.2 | 270 | 320 | 350 | 285 | 325 | 235 | | | | |
| | 3000 | 2983 | 47.5 | 270 | 320 | 350 | 235 | 270 | 235 | | | | |
| | 3500 | 3479 | 55.4 | 270 | 320 | 350 | 210 | 240 | 235 | | | | |

IAM•HD H6

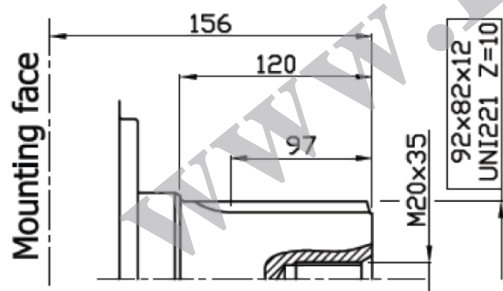
Dimensional drawings

IAM•HD 2200 – 2500 – 3000 – 3500 H6

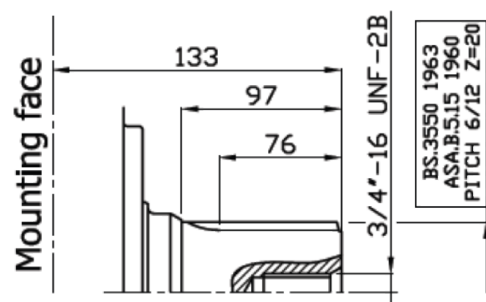


SHAFTS

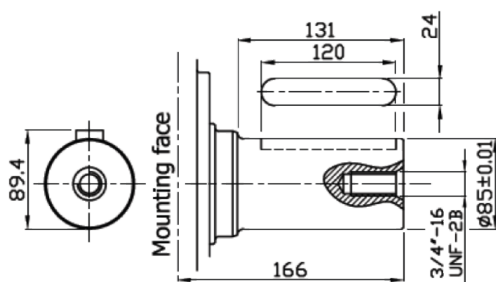
A0: Standard splined shaft



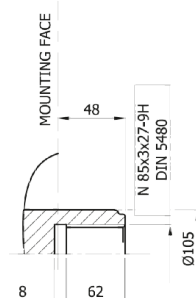
A1: Splined shaft on request



A2: Parallel shaft on request



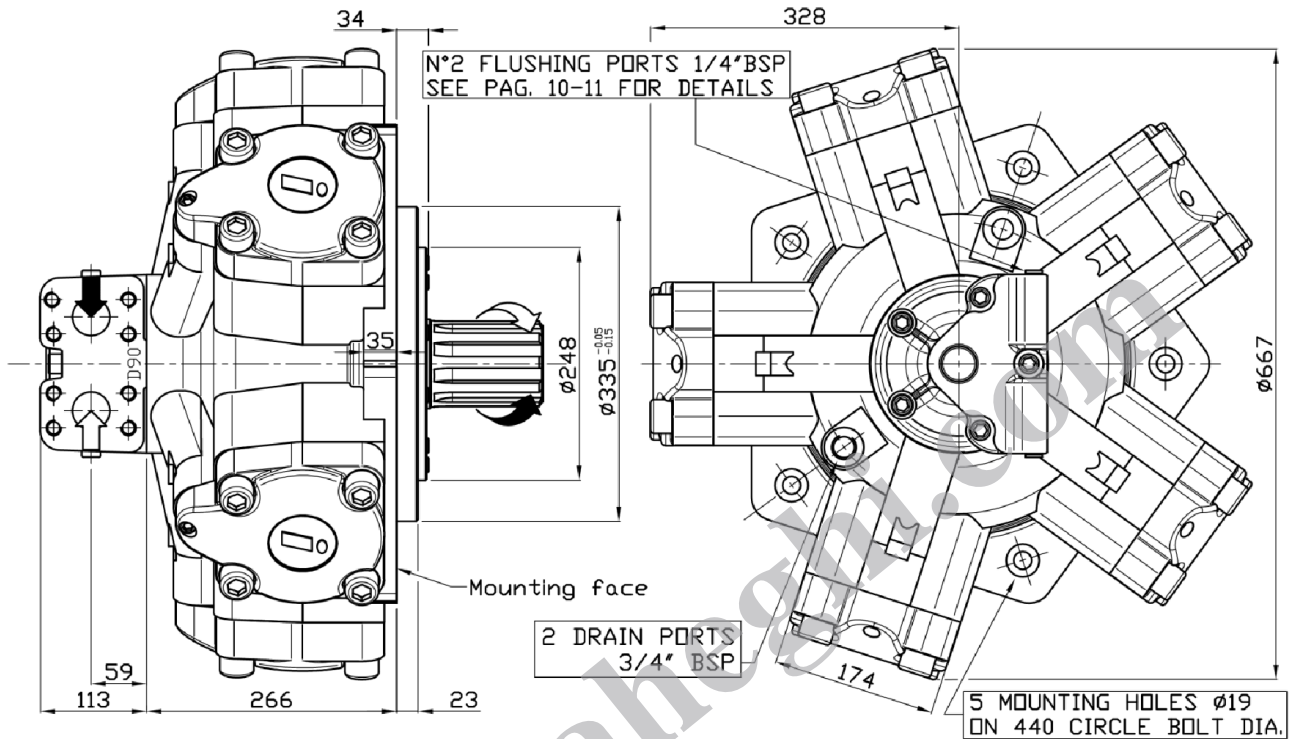
A3: Internal splined shaft



IAM•HD H6

Dimensional drawings

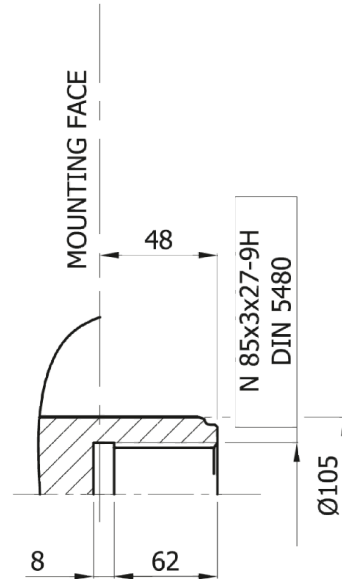
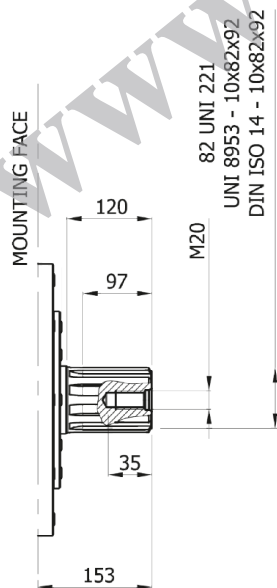
IAM•HD 2200/C – 2500/C – 3000/C – 3500/C H6



SHAFTS

A0: Standard splined shaft

A3: Internal splined shaft



IAM•HD H6

Ordering instructions

| IAM•HD | --- | / _ | H6 | A _ | D _ _ | SB _ |
|---------------------------------|-----|-----|----|--------------|--------------------|----------------------|
| Model | | | | | | |
| Displacement | | | | | | |
| 2200 cc/rev | | | | | | |
| 2500 cc/rev | | | | | | |
| 3000 cc/rev | | | | | | |
| 3500cc/rev | | | | | | |
| Interchangeability | | | | | | |
| /C | | | | | | |
| Housing | | | | | | |
| A0 – Standard splined shaft | | | | Shaft | | |
| A1 – Special splined shaft | | | | | | |
| A2 – Parallel keyed shaft | | | | | | |
| A3 – Internal splined shaft | | | | | | |
| | | | | | Distributor | |
| D90 – SAE 1 ½ “ 6000 psi flange | | | | | | |
| | | | | | | Spline billet |
| SB9 – 82 UNI 221 | | | | | | |
| SB10 – BS 3550 20 T 6/12 | | | | | | |

EXAMPLE: IAM•HD 3000 H6 A0 D90